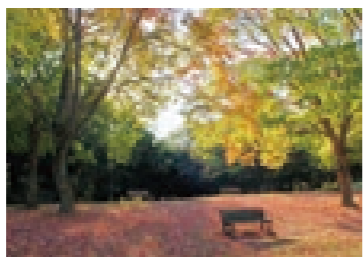


Tokorozawa Aviation Memorial Park

This park was built on the site of Tokorozawa Airfield, the first public airfield in Japan. The park contains not only a C-46 medium-sized transport plane used by the Air Self-Defense Force but also a children's play area, dog run, outdoor stage, and more, so that it can be enjoyed all year round.

📍 1-13 Namiki, Tokorozawa City ☎ 04-2998-4388 Car park with 580 spaces (free for up to two hours) **GO** Right next to East Exit of Koku Koen Station on the Seibu Shinjuku Line. **MAP D-2**



Plaza in front of Koku Koen Station

When you come out of the station, you are greeted by a YS-11 passenger plane, the first developed and manufactured in Japan in the post-War period.

TOKOROZAWA

04

In 1911, airplanes took off into the heavens from here.
A park where both aviation fans and novices can feel at home.



Tokorozawa Aviation Museum

A museum containing materials relating to the history of aviation, as well as model airplanes. If you try your hand at controlling a plane with the flight simulator, you can feel like a pilot!

📍 Inside Tokorozawa Aviation Park, 1-13 Namiki, Tokorozawa City ☎ 04-2996-2225 9:30 - 17:00 (last entry 16:30) Closed Mondays (except for national holidays, when it is closed the following day) and during the New Year's holiday period **GO** 8 minutes on foot from East Exit of Koku Koen Station on the Seibu Shinjuku Line.

MAP D-2



A monument to Lieutenants Kimura and Tokuda, the victims of Japan's first aviation accident in 1913.



Colonel Faure, a Frenchman who devoted great energy to the progress and development of Japan's aeronautical technology.



The Japanese Tea Garden Saisho-tei

A tea room where you can readily learn more about and enjoy the "tea ceremony", part of Japan's traditional culture. You can enjoy powdered green tea from Sayama as you gaze at the beautiful formal garden.

📍 Inside Tokorozawa Aviation Park, 1-13 Namiki, Tokorozawa City ☎ 04-2991-4310 10:00 - 16:00 (15:45 LO) Open all year round **GO** 5 minutes on foot from East Exit of Koku Koen Station on the Seibu Shinjuku Line.

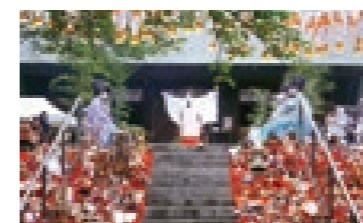
MAP D-2



Tokorozawa Shinmeisha Shrine

The guardian deity of the former Tokorozawa Town. It is famous for the earliest fair in Japan selling decorative bamboo rakes believed to bring good fortune (January 1 - 3). Tokorozawa, where there is a thriving production of dolls and ornamental battledores, is also known as a town of dolls, and a memorial service for dolls offered from around the country is held on the first Sunday in June.

📍 1-2-4 Miyamotocho, Tokorozawa City ☎ 04-2922-3919 **GO** 3 minutes on foot from the "Tokoro Iriguchi" stop of Tokoro Bus "Yamaguchi Circular Course" **MAP C-2**



TOKOROZAWA

05

Why not seek good fortune from the gods of Tokorozawa?



Tamon-in Temple

The principal image is a golden Vaisravana, a guardian god, said to have been the guardian deity of Shingen Takeda. 300 peonies decorate the precincts in spring. On May 1 each year, a Tiger Festival is held at which worshippers petition the tiger which is the incarnation of the Vaisravana.

📍 1501 Nakatomi, Tokorozawa City ☎ 04-2942-0814 **GO** 7 minutes on foot from stop 20, "Tamon'in Dori Nishi" of Tokoro Bus "Northern Route Tomioka Circular Course"

MAP D-1



Shiroyama Jinjya Shrine / Takino Jyoshi Park

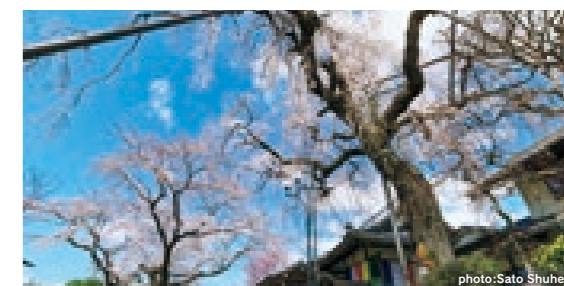


Shiroyama Shrine is inside the park built on the site of Takino Castle, said to have belonged to Ujiteru Hojo. As well as the dogtooth violets in the park, the cherry blossom is a sight to see. Also, the "Warring States Takino Castle Festival" is held each year on the third Sunday in May, with a procession of warriors and a mock battle. 📍 537 Shiro, Tokorozawa City ☎ 04-2944-3704 **GO** 10 minutes on foot from "Shiro" stop of Seibu Bus' route departing from the East Exit of Tokorozawa Station on the Seibu Ikebukuro Line or the Seibu Shinjuku Line. **MAP F-2**



Konjo-in Temple (Yamaguchi Kannon)

A temple of the Shingon sect of Buddhism, said to have been founded by the famous monk Kobo Daishi. There are two thousand-armed Kannon statues. The statue at the rear is ordinarily kept hidden from view, but is revealed to the public once every 33 years. There is also the Yoshisada Horseback Statue, showing Yoshisada Nitta astride his beloved horse. 📍 2227 Kami-yamaguchi, Tokorozawa City ☎ 04-2922-4258 9:30 - 17:00 **GO** 8 minutes on foot from Seibu Kyujo-mae Station on the Seibu Sayama Line (change from the Seibu Ikebukuro Line at Nishi-tokorozawa Station) **MAP B-3**



Kosenji Temple

The temple was established as far back as the Heian Period. There is a famous weeping cherry tree planted around 150 years ago which has a very beautiful shape. 📍 343 Horinouchi, Tokorozawa City ☎ 04-2948-1915 **GO** About 15 minutes on foot from stop 27, "JA Mikajima Shiten-kita" of Tokoro Bus "Shin-tokorozawa/ Mikajima Course" from South Exit of Kotesashi Station on the Seibu Ikebukuro Line **MAP A-2**